
Install WIN98

The LAN Device Driver can't be set up automatically, you need double click on **My Computer** -> **Control Panel** -> **System** icon to bring up **System Properties** screen.

Select tab "**Device Manager**".

You will find a yellow "?" mark at **PCI Ethernet Controller**, that means the driver is not recognize.

Double click on the **Etherent Controller**.



Then **PCI Ethernet Controller Properties** windows will appear on your screen.

Click on the "**Reinstall Driver**" bar to install driver.



The **Update Device Driver Wizard** windows will appear on your screen.

Click on "**Next**" bar to continue.



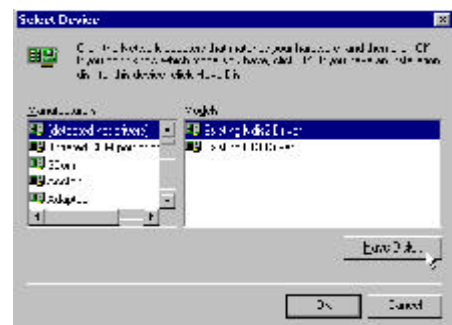
Please choose **"Display a list of the drivers in a specific location, so you can select the driver you want"** to the manual install driver, and click on **"Next"** bar to continue.



Select **"Network adapters"** bar for LAN device and click on **"Next"** bar to continue.



Insert the support CD by the mainboard manufacturer and choose **"Have Disk"** bar to continue next step.



Indicate the driver's location as **"D:\lan\WIN98\NETRTS5.INF"** (In this location CD disk drive is supposed to be "D" letter.)



Select "**Realtek RTL8139 [A/B/C/8130] PCI Fast Ethernet NIC**" to install, and then click on "**OK**".



Make sure "**Realtek RTL8139 [A/B/C/8130] PCI Fast Ethernet NIC**" driver, and click on "**Next**".

Then the system will do the setup automatically.



Completing the upgrade device driver, and click on "**Finish**" to restart the system to take all the changes effect.



After restart, you may check Network adapters under the location mentioned at right figure.

The Network adapters shows correctly.

